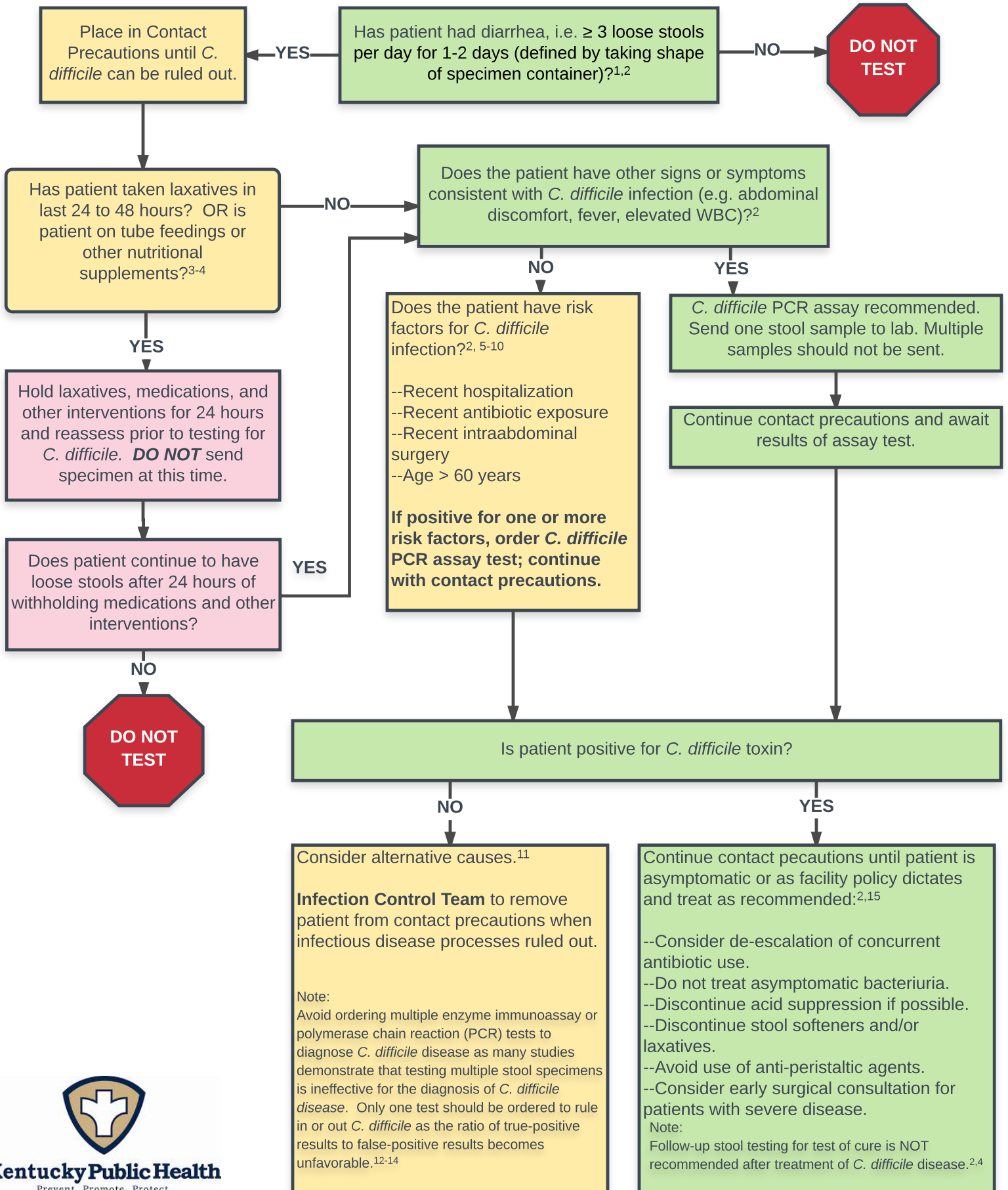


# Clostridium difficile Testing Algorithm



## References

1. Centers for Disease Control and Prevention (CDC). 2015. Healthcare-associated Infections: *Clostridium difficile*. [https://www.cdc.gov/hai/organisms/cdiff/cdiff\\_infect.html](https://www.cdc.gov/hai/organisms/cdiff/cdiff_infect.html). Updated March 1, 2016. Accessed August 8, 2017.
2. Cohen SH, Gerding DN, Johnson S., et al. Clinical practice guidelines for *Clostridium difficile* infection in adults: 2010 update by the Society for Healthcare Epidemiology of America (SHEA) and the Infectious Diseases Society of America (IDSA). *Infect Control Hosp Epidemiol*. 2010;31:431-455.
3. Kwon JH, Reske KA, Hink T, Burnham CAD, Dubberke, ER (2017). Evaluation of correlation between pretest probability for *Clostridium difficile* infection and *Clostridium difficile* enzyme Immunoassay results. *J Clin Microbiol*. 2017; 55: 596-605.
4. Dubberke EH, Han Z, Bobo L, et al. Impact of clinical symptoms on interpretation of diagnostic assays for *Clostridium difficile* infections. *J Clin Microbiol*. 2011; 49: 2887-2893.
5. McFarland LV, Suarwicz, CM, Stamm WE. Risk factors for *Clostridium difficile* carriage and *C. difficile*-associated diarrhea in a cohort of hospitalized patients. *J Infect Dis*. 1990; 162; 678-84.
6. Al-Eidan FA, McElnay JC, Scott MG, Kearney MP (2000). *Clostridium difficile*-associated diarrhea in hospitalized patients. *Clin Pharmacol Ther*. 2000; 25: 101-109.
7. Despande A, Pant C, Pasupuleti V, et al. Association between proton pump inhibitor therapy and *Clostridium difficile* infection in a meta-analysis. *Clin Gastroenterol Hepatol*. 2012; 10: 225-233.
8. Bavishi C, DuPont HL. Systematic review: The use of proton pump inhibitors and increased susceptibility to enteric infection. *Aliment Pharmacol Ther*. 2011; 34: 1269-81.
9. Nissle K, Kopf D, Rosler A. Asymptomatic and yet *C. difficile*-toxin positive? Prevalence and risk factors of carriers of toxigenic *Clostridium difficile* among geriatric in-patients. *BMC Geriatr*. 2016; 16(185). Available from [https://www.ncbi.nlm.nih.gov/pmc/articles/PMC5111236/pdf/12877\\_2016\\_Article\\_358.pdf](https://www.ncbi.nlm.nih.gov/pmc/articles/PMC5111236/pdf/12877_2016_Article_358.pdf)
10. Eze P, Balsells E, Kyaw MH, Nair H Risk factors for *Clostridium difficile* infections - An overview of the evidence base and challenges in data synthesis. *J Glob Health*. 2017; 7(1). Retrieved from <https://www.ncbi.nlm.nih.gov/pmc/articles/PMC5460399/pdf/jogh-07-010417.pdf>
11. Polage CR, Solnick JV, Cohen SH. Nosocomial diarrhea: Evaluation and treatment of causes other than *Clostridium difficile*. *Clin Infect Dis*. 2012; 55(7): 982-989.
12. Alchinger E, Schleck CD, Harmsen WS, Nyre LM, Patel R. Nonutility of repeat laboratory testing for detection of *Clostridium difficile* by use of PCR or enzyme immunoassay. *J Clin Microbiol*, 2008; 46(11): 3795-3797.
13. Drees M, Snyderman DR, O'Sullivan CE. Repeated enzyme immunoassays have limited utility in diagnosing *Clostridium difficile*. *Eur J Clin Microbiol Infect Dis*. 2008; 27(5): 397-399.
14. Mohan SS, McDermott BP, Parchuri S, Cunha BA. Lack of value of repeat stool testing for *Clostridium difficile* toxin. *The Am J Med*. 2006; 119(4): 356 e7-8.
15. Suarwicz CM, Brandt LJ, Binion DG, et al. Guidelines for diagnosis, treatment, and prevention of *Clostridium difficile* infections. *Am J Gastroenterol*. 2013; 108: 478-498.