

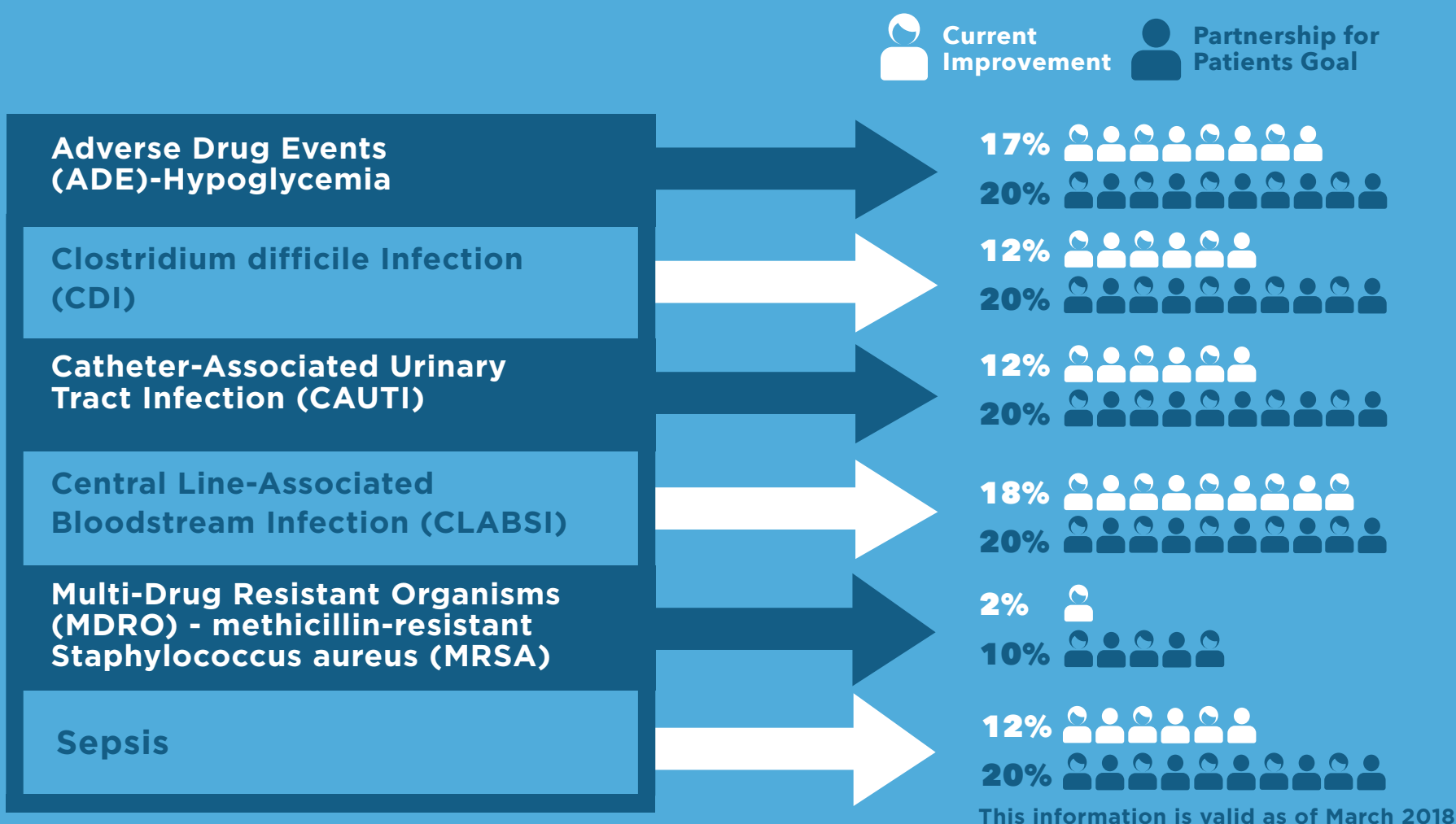
# ALIGNING DATA AND INSIGHTS FOR ACTION

## Health Research and Educational Trust: Hospital Improvement Innovation Network (HIIN)

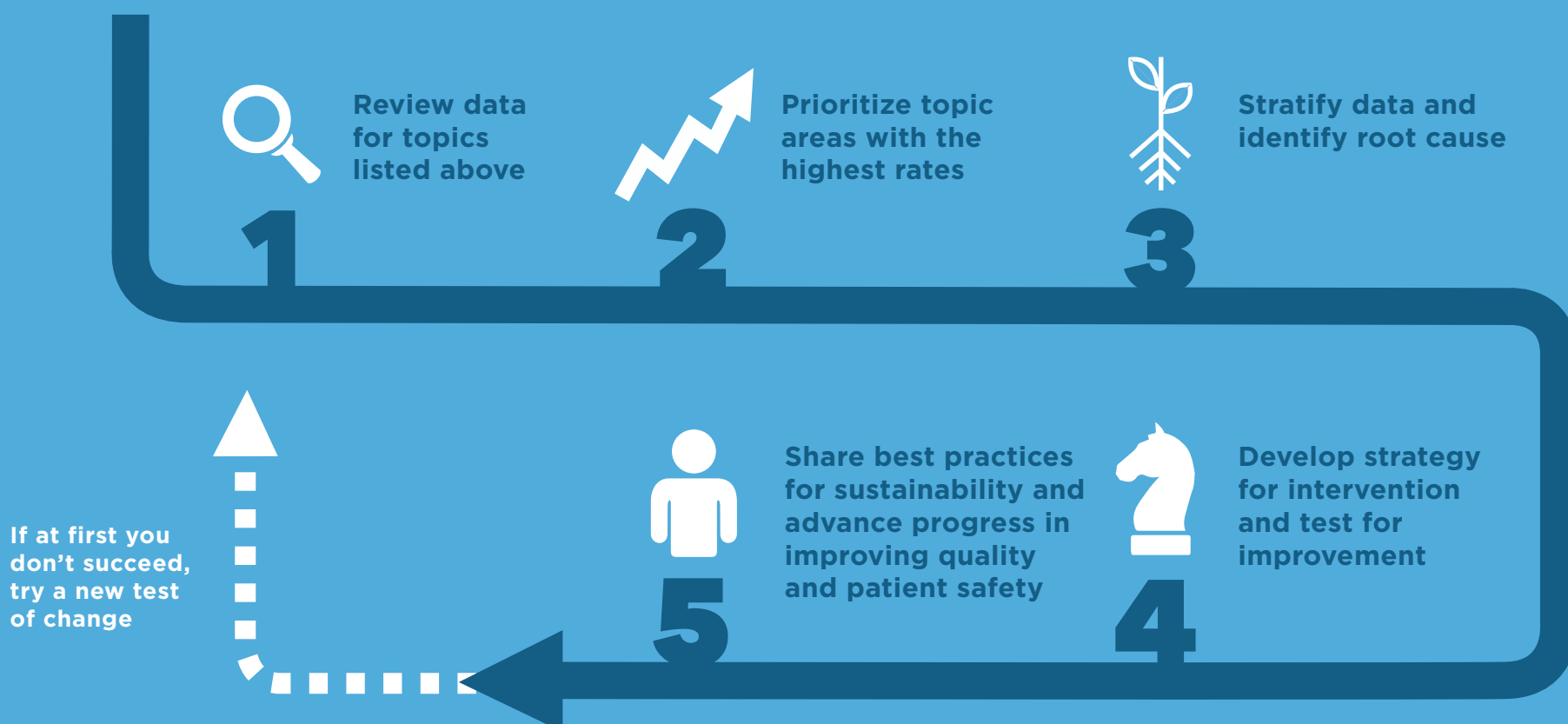
HRET HIIN is a contract funded by CMS that aims at continuing efforts to reduce all-cause inpatient harm by 20% and readmissions by 12%

Use the information below to identify potential interventions and best practices shared across the field to reduce the most pressing national harms

### STATUS OF MOST PRESSING NATIONAL HARMES:



### PATH TO IMPROVEMENT



# LESSONS LEARNED FROM YOUR HRET HIIN PEERS:

## ADE: Hypoglycemia



Educate patients and families regarding hypoglycemia rescue protocols



Adjust the insulin regimen after a single episode of hypoglycemia (Glucose < 70 mg/dl)



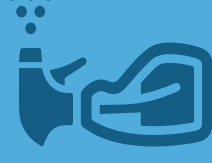
Use the assessment tool with hospitals that have high rates to help them understand what is driving ADE Hypoglycemia in their hospital



Focus on Diagnostic Stewardship to guide laboratory and clinical diagnosis of CDI



Develop a process to minimize testing of patients at a low probability for CDI



Establish cleaning protocols that are effective against CDI spores



Stop inserting and/or leaving in indwelling urinary catheters unless clinically indicated, particularly in the ED, ICU and PACU. Ask if there is a need for strict I & O in critical care patients



Stop culturing asymptomatic patients



Consider utilizing alternatives such as the female external catheter



Stop leaving central lines in place that are not clinically indicated



Stop routinely drawing blood cultures from the central line



Consider blood culture specimen diversion



Engage all direct care staff and providers in peer-supported hand hygiene adherence efforts



Involve and educate patients, families and the public about the risk of unnecessary antibiotic use and community resistance patterns



Consider matching decolonization strategies to risk assessment and surveillance findings to target appropriate units and populations



Focus on early identification and treatment, especially in the small/CAH subgroup



Start sepsis screening in PACU with a focus on high risk patients - post-op, immunocompromised, those with devices



Complete enhanced recovery after surgery (ERAS) protocol for each patient

## Sepsis

## CLABSI

## MDRO-MRSA